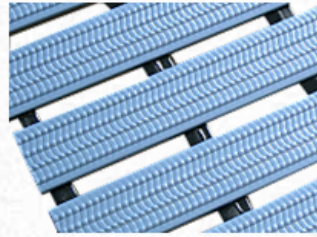


Kosteantilan matot ja ritilät

Floor grating with a hard-PVC-surface

The long-lasting surface-profiles, made of high-quality hard-PVC, are running across the grain.

The EHA-ManuPlast grating has an integrated drainage system. Because of its own weight (about 6 kg/m²), the mat lays down the floor very well (no floating of the mat).



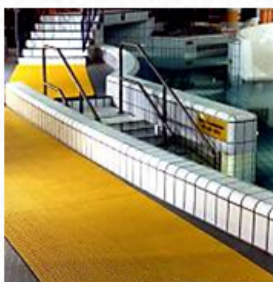
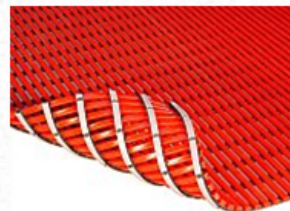
We offer this grating in three widths and six attractive colours.

Areas of application:

- shower - and washrooms
e.g. in industry, hospitals, schools, sport-facilities, canteen kitchens
- bathrooms
e.g. swimming-pools, spas, saunas, massage parlours

Floor mat with outstanding antiskid properties (antibacterial, fungicidal)

NEW: Due to a water drain on all sides and a specially designed back surface profile, the EHA-Wet room mat - even in small sizes - adheres firmly to the floor.



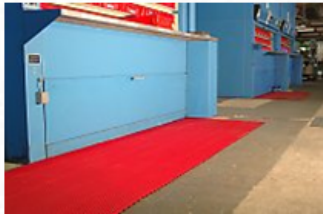
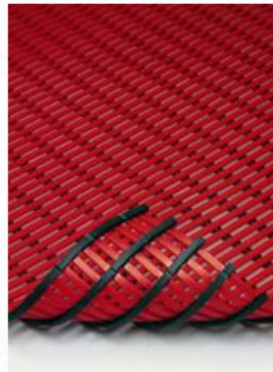
Durable antibacterial additives to the material effectively prevent the development of fungi and germs. Therefore, this mat is an extremely sanitary solution.

Areas of application:

- **Now especially suitable for:**
patient care units in hospitals and health care facilities
- showers and washing facilities
- changing rooms
- spas, massage parlours
- swimming pools and saunas

Our standard version for wet rooms

Our EHA-Mat standard sets the benchmark for floor gratings in wet areas and workplaces. Thanks to the integrated drainage system, which ensures water drainage from all sides, the standard mat is suitable for all areas where considerable amounts of moisture need to drain off quickly.



Due to the use of soft plastic profiles, the mat provides great ergonomic comfort. Skid resistance class C to GUV 26.17/DIN E 51097

Areas of application:

- ideal for wet areas
- workplaces where considerable amounts of moisture need to drain off quickly
- changing rooms
- spas, massage parlours, hospitals
- swimming pools and saunas